



AUTOMOTIVE SEAT HEATING & COOLING

DegreeZ™

by **katzkin®**

INSTALLATION GUIDE

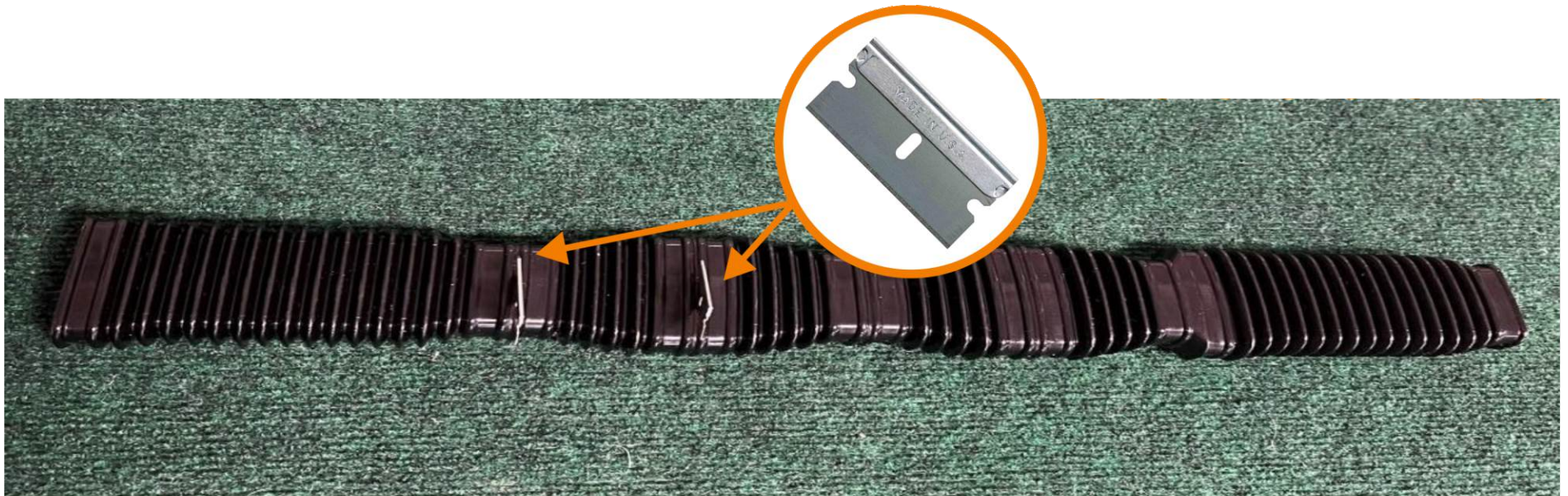
BEFORE YOU BEGIN..

Lay every component out to make sure you have them all.



PREPARE THE UNITS FOR INSTALLATION

Layout the duct tubing and, using a razor blade, cut where indicated.



ASSEMBLE THE FAN UNITS

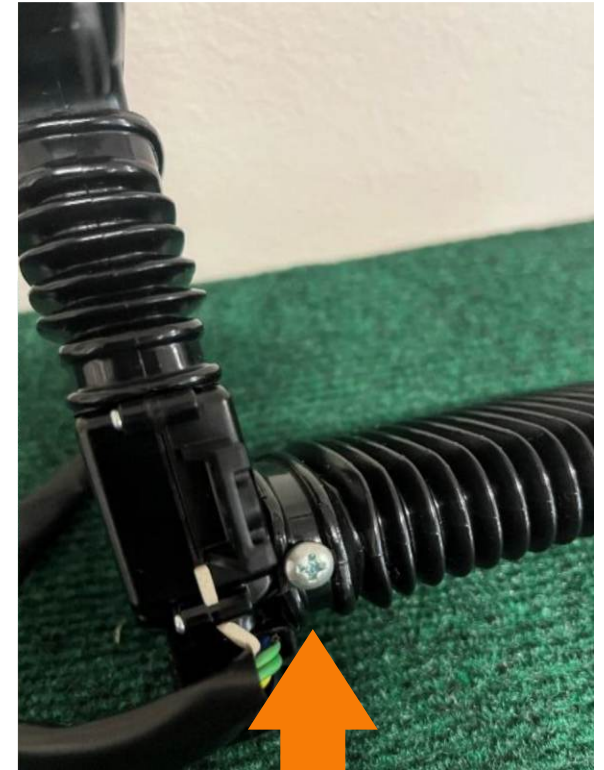
Assemble each unit this way on every install. See photos showing the bar code on the fan units upside down. **THE BAR CODE MUST BE UPSIDE DOWN** or units will not work.



Bar Code **MUST** be upside down.



Install self-tap screws... this portion only



ASSEMBLE THE FAN UNITS

Make sure your assembled fan units look like the pictures below before proceeding with installation.



Cushion Unit

Leanback Unit

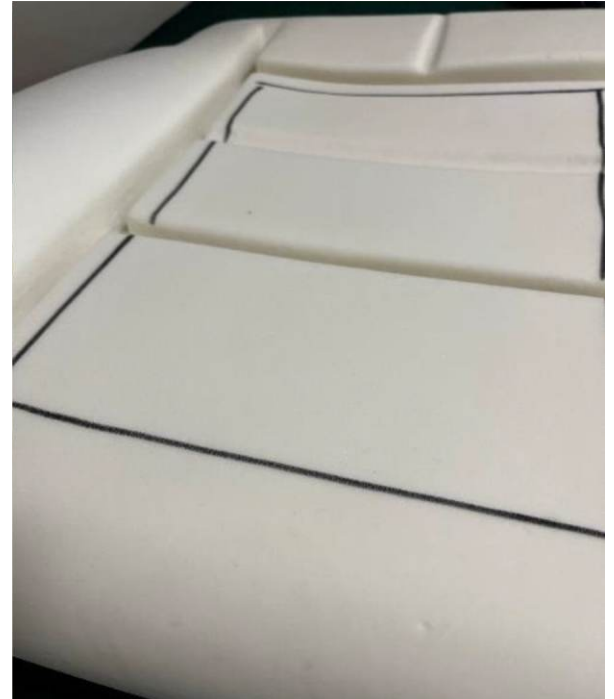


Side View

SEATS AND AIR DISTRIBUTION PAD

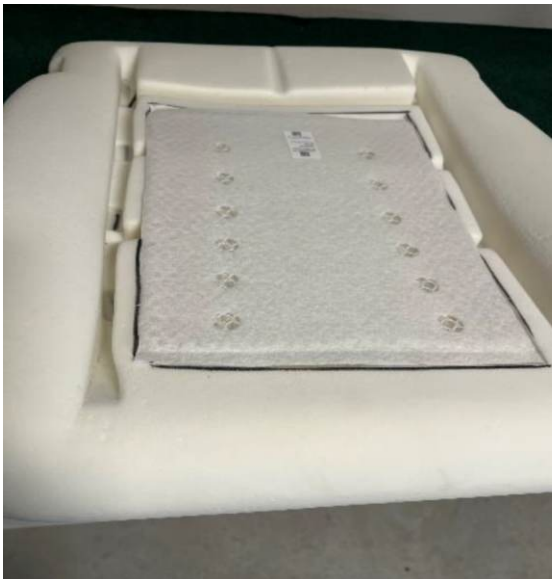
- Remove seats from vehicle
- Remove upholstery from seats
- Katzkin interiors contain perforated inserts and reticulated foam. System will not work without both. DO NOT install without both.
- Determine Air Distribution Pad placement.

You need to decide where on the seats the pad will be installed. Depending on the seat pattern, listing attachments may be covered, and in some cases it will be necessary to float the listing and use only one of the attachment points.



SEATS AND AIR DISTRIBUTION PAD

- Trench seat foam for air distribution pad
- Use a router or razor blade to trench out seat foam 3/8" to allow pad to lay flush. If seat foam is not trenched, distribution pad will not work properly, upholstery will puddle, and customer will complain that the seat is too hard and uncomfortable.
- Determine Fan Unit placement
Unit should be as close to the center of the distribution pad as possible. If the center of the seat is not directly accessible from bottom of seat foam, mount unit as close as you can. Every seat is different and you may have to get creative on how the fan units are installed.



CUT DUCT HOLES FOR UNIT PLACEMENT

- Temporarily attach unit to bottom/back of seat and replace foam
- Mark where unit will need to connect. Use duct hole template to trace an outline of unit output on seat foam
- Cut hole for unit output on foam and pad using duct hole template
- Trim excess duct tubing to foam surface. Remove adhesive tape, apply spray adhesive and mount pad. Make sure unit output is aligned to the input of the distribution pad.

Seat
Cushion



Distribution
Pad

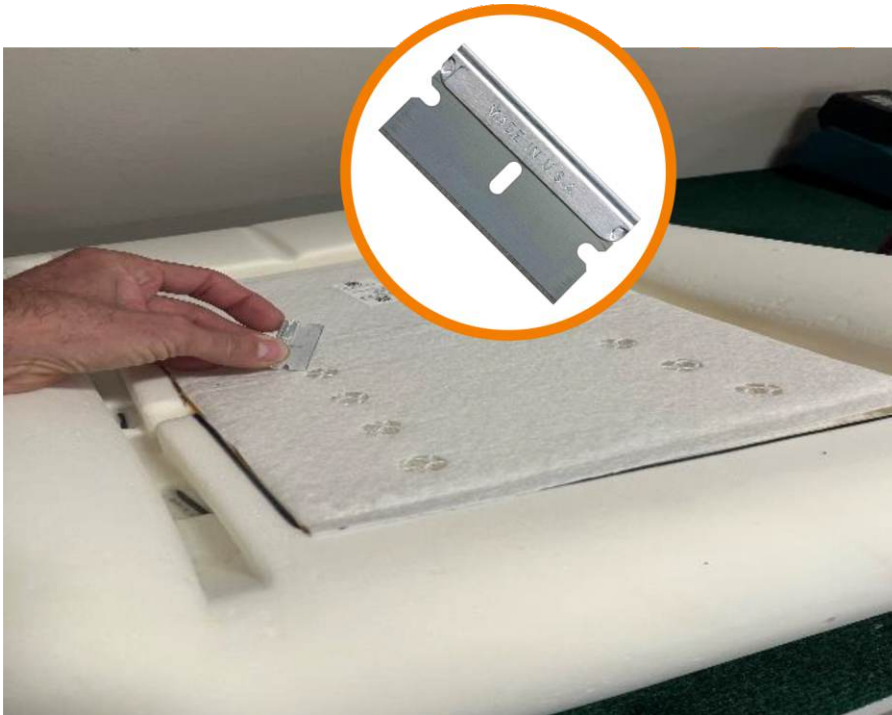


ATTACH UNIT AND BLOWER

Some seat components may need modification to mount units and blowers. Every seat is different and you will have to figure out best installation method for your vehicle, being creative and possibly having to fabricate mounting points. Exhaust paths are only used on lean backs and should be aimed towards center console.

MODIFY DISTRIBUTION PAD FOR AIRFLOW

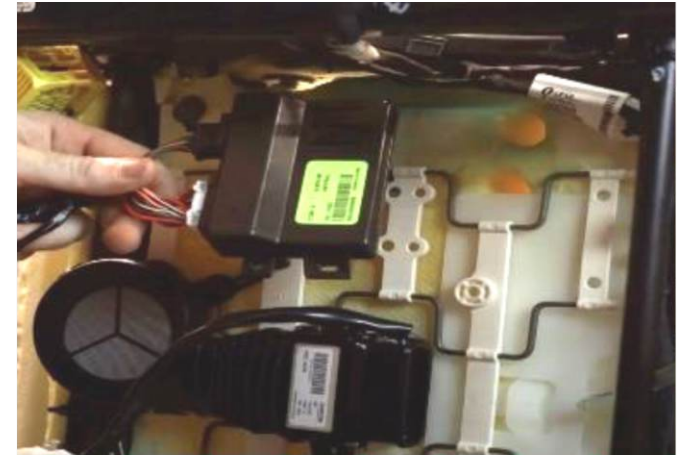
Outer layer of pad may be modified to optimize airflow. Do not cut pad directly over unit output as you will want to create even air pressure throughout the pad. Use a razor blade (see photos).



CONNECT HARNESS AND CONTROL MODULE

Wiring harness needs to be plugged into units, blower, control module and switch in order to power the system. Under the seat will typically give you the most room to mount control module and hide cables.

Before proceeding with the Degreez install, you must now **INSTALL THE KATZKIN LEATHER INTERIOR.**



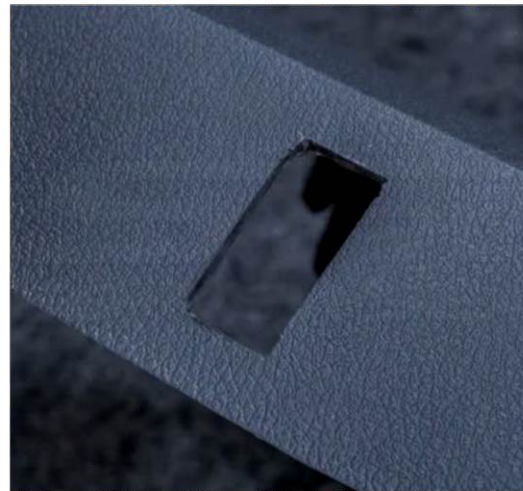
INSTALL AIR INTAKE BEZEL

Install included air intake bezel for the lean back blower using duct hole template. With the backrest cover installed, mark the placement of the bezel so it sits inline with the blower. Cut out and install.



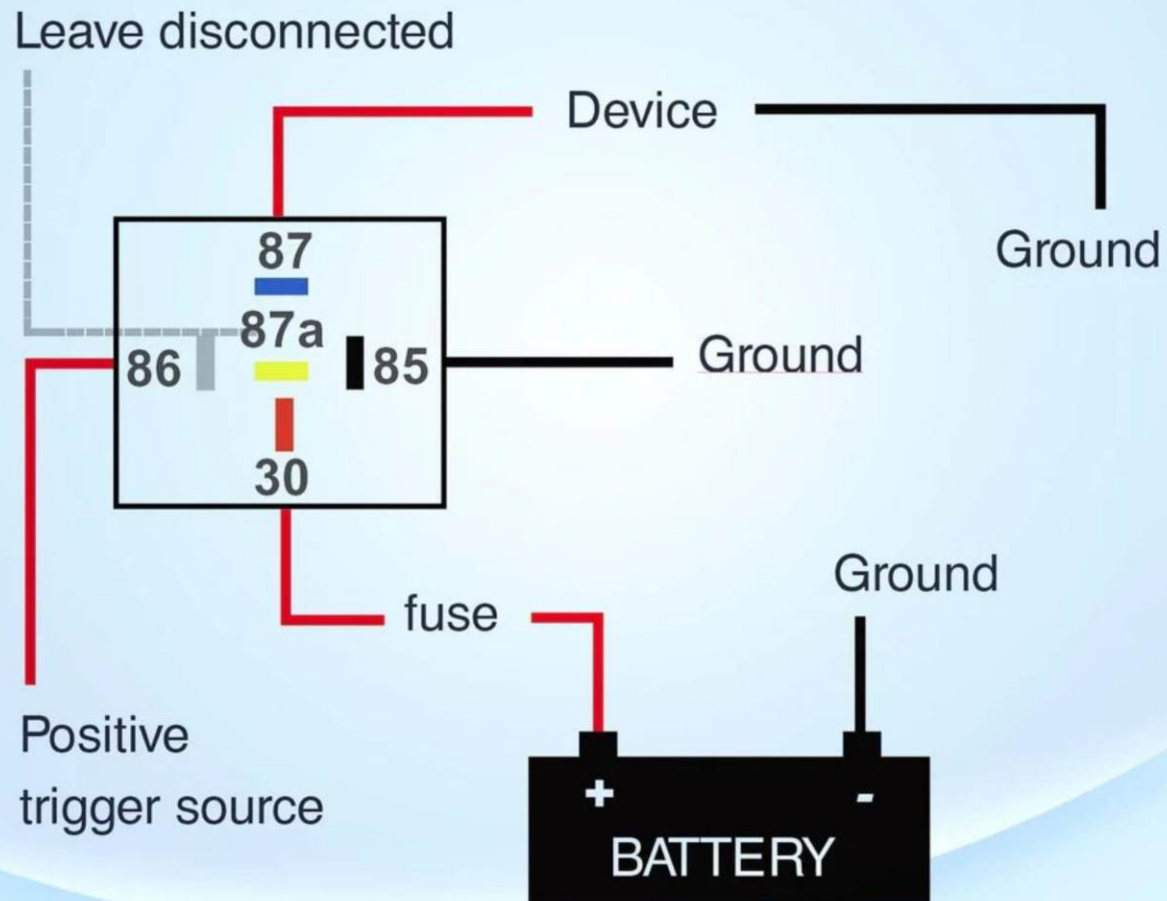
INSTALL SWITCH

- Determine where the switch will be mounted. We always recommend the seat plastics whenever possible, making sure there is enough clearance behind the mounting surface for the switch body and wiring harness
- Using the Switch Hole Template, trace then cut the hole
- Install switch and route wiring back to the main wiring harness
- When wiring, **ALWAYS USE A RELAY!**
- We recommend wiring seats separately. 12 volt power source is rated for a minimum of 20 amps.



WIRING DIAGRAM

NORMALLY OFF RELAY WITH A *POSITIVE* TRIGGER



FINAL STEPS

- Reinstall seats
- Connect power wiring harness to seats' wiring harness and bolt the seats in place
- Test your installation: Start the car and turn switch(es) on. Are the units getting hot and cold?
- Move seat back and forth making sure no wiring is in the way of seat operation. Test units for about ten minutes on heat to make sure no fuses are faulty, that the seats are comfortable and everything is operating as designed.

TECH SUPPORT

If you have any installation questions or are having challenges, please contact Katzkin for support at [\(800\)842-0590](tel:8008420590). You'll be put in touch with one of our technical support associates.

For other tech tips, videos and bulletins, please download our free Katzkin Mobile App.

